

# FARMHOUSE DELI AND STORE VENUE



## THE WEDDING PACKAGES

**Rates N\$60.00 per guest**

Children 5-12 years 50% Discount

Children 0-4 years No charge

## THE PROPERTY

You are hereby invited to enjoy the ideal setting for your wedding.

## ACCOMMODATION & FACILITIES

All abroad! : Farmhouse Deli offers 8 fully equipped double rooms: Conductors inn.

One Honeymoon suite and also a camping site at highly affordable rates.

We would like to invite you and your wedding guest to relax and have fun: feel free to unwind, explore the outdoors on our hiking through the vineyard and citrus trees on the 18-hectare fenced in property.

Our accommodation rates is available on [booking.com](https://www.booking.com)



[accounts@farmhousedeli.com](mailto:accounts@farmhousedeli.com)  
[usedeli.com.na](https://www.usedeli.com)



067 222 128/918



YOUR DREAM WEDDING  
DESTINATION IN THE  
NORTH

## OUR VENUE

### **The Vineyard**

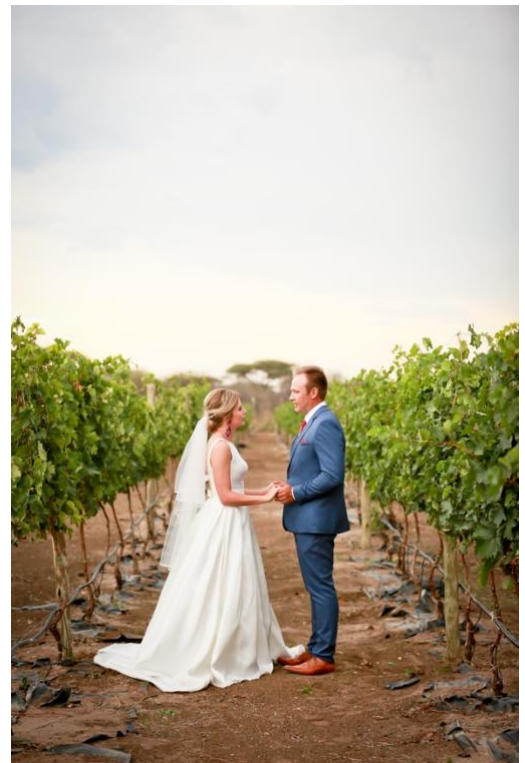
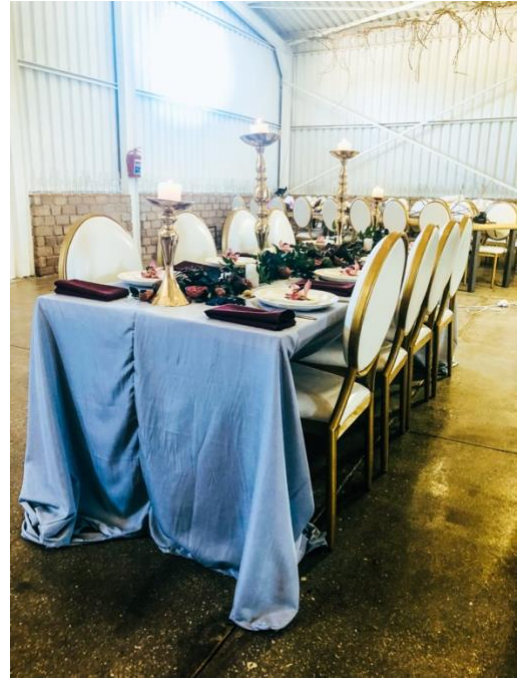
The Vineyard is ideal for an outdoor ceremony.

### **Reception area**

To the left of the Venue Hall is a reception area under roof but still with an open-air feeling for your guest to mingle while you have some time to take photo's after the ceremony.

### **The Venue Hall**

This exclusive hall with its high ceiling and 3 dramatic chandeliers with large dancing area offering a total of 200m<sup>2</sup> makes it ideal for the bigger wedding parties. Being 10km from Tsumeb with no neighbour makes it the ideal setting for privacy and partying until the early morning.





### INCLUDED IN THIS RATE

Venue hire – Venue Hall, Reception area, Vineyard  
Crockery, cutlery and glassware  
Banqueting chairs -white with gold for reception.  
The set-up of above equipment according to your requirements.

### WITH OUR COMPLIMENTS:

Honeymoon suite for wedding couple the night of the wedding.  
1 Bottle of sparkling wine in the Honeymoon suite.

### **Excluded from the Wedding Package**

You would need your own wedding planner.  
Table cloth, or chair covers which may be required.  
Should you want to have your ceremony in the Vineyard there is a cost for the chairs.  
Accommodation Rates for wedding guest is available on request  
Beverages, please indicate your choice of bar service required:  
Full open bar  
Restricted open bar  
Cash bar

Please note that no beverages may be brought onto the Premises by yourself or any of your guest.

Our wine and beverages list are available for your perusal. Please confirm your choice of wine a minimum of 14 days before your Wedding date.

For your catering needs, please refer to our dinner menu for details and rates.  
Please do inform us of any additional meals or needs you may have.

# VENUE LAYOUT



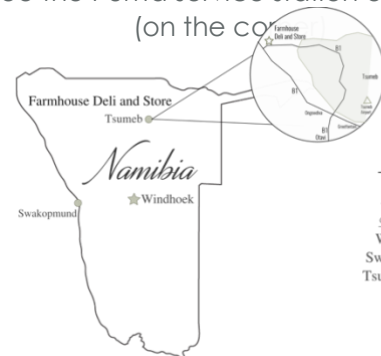
## Welcome to Farmhouse Deli and Store

- |                                  |                            |
|----------------------------------|----------------------------|
| 1. Puma Service station          | 13. Grass Campsite         |
| 2. Ok Foods                      | 14. Promogranite lane      |
| 2A. Bar                          | 15. Paw Paw Avenue         |
| 2B. Childrens play area          | 16. Apple orchid           |
| 3. Vegetable stalls              | 17. Banana plantation      |
| 4. Toilets                       | 18. Vegetable patch        |
| 5. Shower facilities             | 19. Vineyard               |
| 6. Overnight Parking for trucks  | 19A Pinotage               |
| 7. Night Kiosk                   | 19B Chenin Blanc           |
| 8. Nursery                       | 20. Venue parking          |
| 9. Citrus lane                   | 21. Winery                 |
| 10. Conductors Inn- Accomadation | 22. Function + Events Hall |
| 11. Honeymoon suite              | 23. Welcome drink area     |
| 12. Camping Ablution block       | 24. Water fountain         |

## DIRECTIONS

From Windhoek:

Drive to the entrance of Tsumeb. Turn left towards Ongewdiva and continue for 6km until you see the Puma service station on your right (on the corner)



*Co-ordinates:*  
-19.22709, 17.65921

*Distances:*  
Windhoek 435 km  
Swakopmund 556 km  
Tsumeb Airport 10 km

*Location:*  
Namutoni Road  
Tsumeb

From Oshikati:

Drive towards Tsumeb using the B1. At the turn off to Tsumeb, you will see the Farmhouse on the left hand side.

# MENU OPTIONS



## GENERAL INFORMATION

This is our standard options, but we are happy to provide you with various event menu options as per your personal requirements.

Children meal and menu options are available as per your request.

Children 0-5 yrs eat for free

Children 6-12 yrs pay 50% of the dinner charge

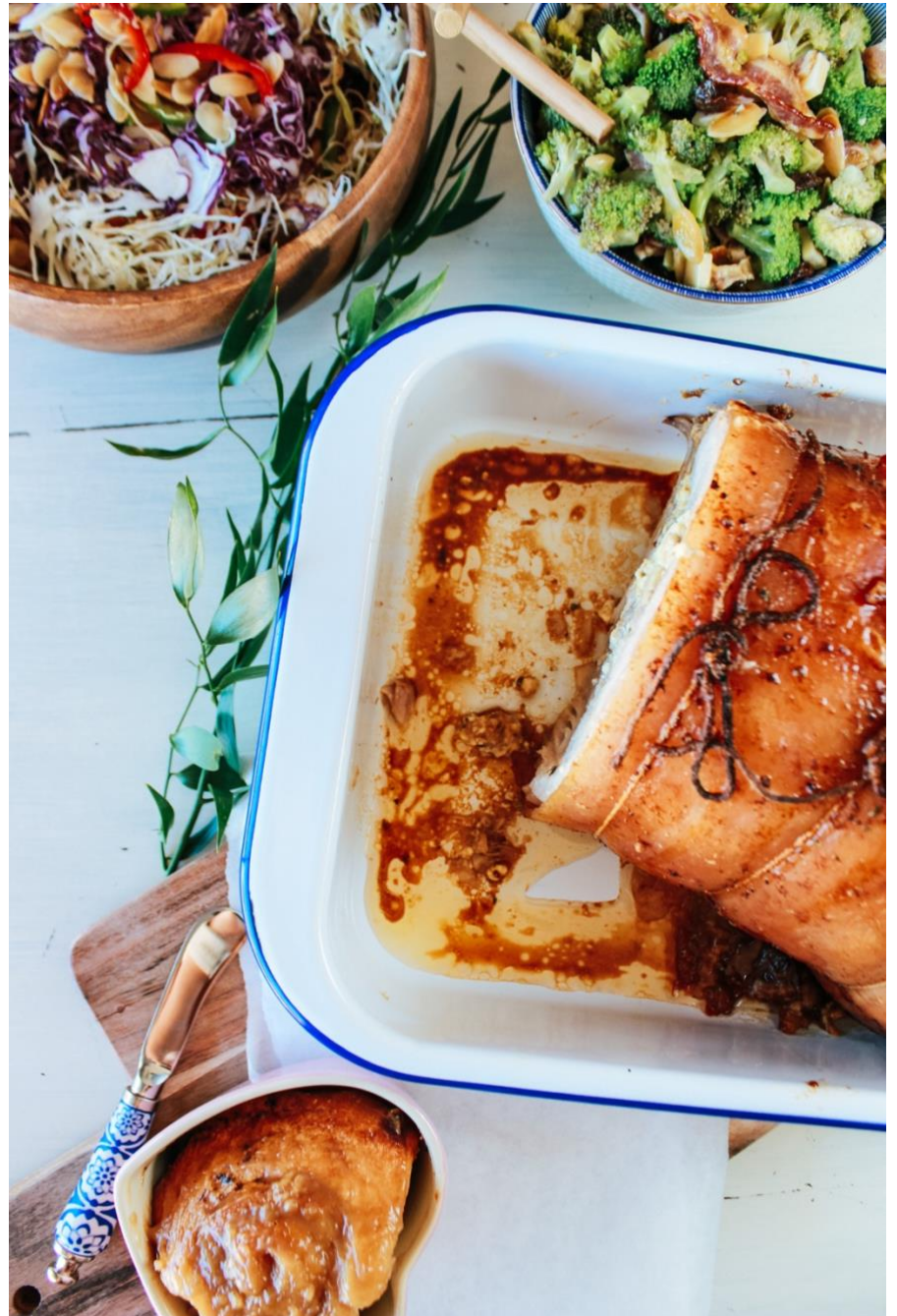
One Waiter per every 15 guest for a plated menu and one server for every 20 guest for a buffet menu.

One Bar tender per 50 guest.

Additional staff can be provided upon request and at additional charges.

Kindly note: No outside food is permitted to be brought onto the property except where permission has been requested for example the wedding cake.

Also, any unconsumed items may not be removed from the property.





## DINNER MENU OPTIONS

### OPTION 1

N\$250.00 pp

#### *Bread course*

Choice of  
1 Bread

.....

#### *Starter*

Choice of  
1 Soup

.....

#### *Cold Buffet*

Selection of  
2 Fresh Garden Salads

.....

#### *Hot Buffet*

Selection of  
2 Meat dishes  
2 Vegetable dishes

.....

#### *Dessert*

Selection of  
1 Desserts

### OPTION 2

N\$300.00 pp

#### *Bread course*

Selection of  
2 Bread choices

.....

#### *Starter*

Selection of  
1 Soup

.....

#### *Cold Buffet*

Selection of  
3 Fresh Garden Salads

.....

#### *Hot Buffet*

Selection of  
3 Meat dishes  
3 Vegetable dishes

.....

#### *Dessert*

Selection of  
2 Desserts

### OPTION 3

N\$340.00 pp

#### *Bread course*

Selection of  
3 Bread choices

.....

#### *Starter*

Selection of  
1 Soup

.....

#### *Cold Buffet*

Selection of  
4 Fresh Garden Salads

.....

#### *Hot Buffet*

Selection of  
3 Meat dishes  
3 Vegetable dishes  
2 Starch dishes

.....

#### *Dessert*

Selection of  
3 Desserts

## MENU ITEM SELECTION



### STARTERS

- Selection of Namibian smoked, cured meats
  - Lime chicken
  - Shrimp cocktail
- Parmesan and black forest ham
- Soup of the day
- Melon wrapped with ham (seasonal)
- Chicken Caesar

### COLD BUFFET

- Roasted Pumpkin Salad, sweet chili + roasted pumpkin seeds
  - Potato salad
  - Mixed bean salad
  - Broccoli Salad
  - Greek Salad
  - Plated salad
- Cabbage salad with soy sauce dressing
- Tomato pasta salad
- Curry pasta with peaches
- Cabbage and carrot salad

### BREAD BUFFET

- Selection of dinner rolls (party bread)
  - Cornbread
  - Focaccia with olives and rosemary
  - Spring onion and cheese pot bread
  - Rooster bread
  - Garlic bread
  - Sweet caramel bread





## VEGETABLE DISHES

Orange and butter glazed carrots  
 Green beans with onions and bacon  
 Baked butternut with honey mustard  
 Fried cabbage with onions  
 Sweet corn  
 Pumpkin fritters

## SIDE DISHES

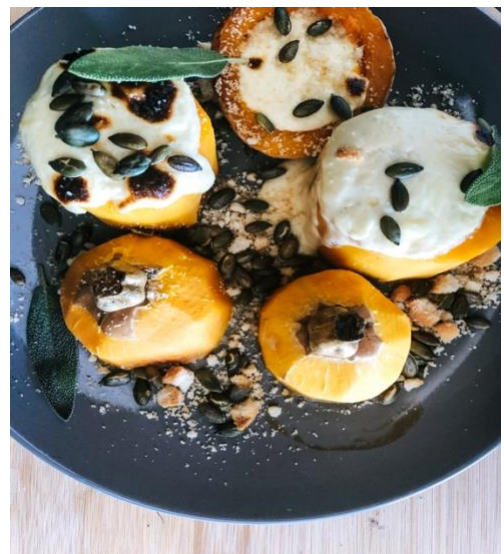
Basmati rice with peas and carrots  
 Mediterranean vegetable couscous  
 Tomato macaroni cheese  
 Maize pap with sauce  
 Herb roasted potatoes  
 Potato bake  
 Mashed potato with cream and cheese

## HOT BUFFET

Beef Roulade  
 Beef Lasagna  
 Beef stroganoff  
 Slow cooked beef brisket with BBQ sauce  
 Braised oxtail  
 Lamb tagine  
 Pork schnitzel with mushroom sauce  
 Spare ribs  
 Game pie  
 Roasted pulled pork  
 Fried chicken  
 Baked chicken mayo  
 Chicken a la king  
 Chicken tikka Masala

## POTJIE

Oxtail with root vegetable  
 Kudu and bacon cooked in red wine  
 Beef shin  
 Chicken curry with coconut and lemongrass







## BRAAI MENU

### OPTION 14

N\$300.00 pp

#### *Bread course*

Selection of  
2 Bread choices

.....

#### *Cold Buffet*

Selection of  
3 Fresh Garden Salads

.....

#### *Hot Buffet*

Selection of  
2 Meat dishes (Stew) Potjies  
2 Meat cuts grilled on the Braai  
2 Vegetable dishes  
2 Starch dishes

.....

#### *Dessert*

Selection of  
2 Desserts

### OPTION 5

N\$360.00 pp

#### *Bread course*

Selection of  
2 Bread choices

.....

#### *Cold Buffet*

Selection of  
3 Fresh Garden Salads

.....

#### *Hot Buffet*

Selection of  
2 Meat dishes (Stew) Potjies  
A whole piglet of Lamb roasted on a Spit  
3 Vegetable dishes  
2 Starch dishes

.....

#### *Dessert*

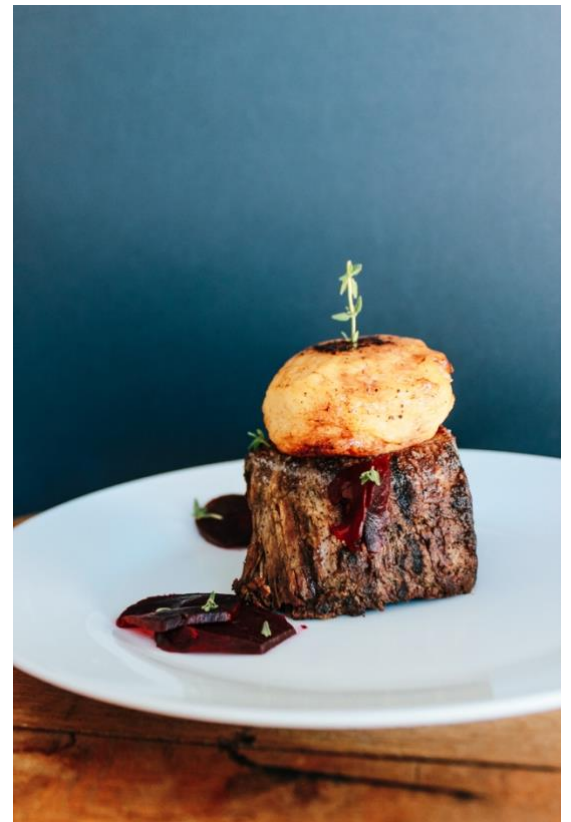
Selection of  
2 Desserts



SERVING STYLES:  
BUFFET  
PLATED  
OR FAMILY STYLE

## BRAAI

- Lamb leg steak with mint marinade
- Lamb skewer with apricots
- Beef skewer
- Chicken skewer with peri- peri marinade
- Lemon Honey chicken
- Pork belly
- Pork chop
- Kessler chops
- Rosemary and Balsamic marinated beef steaks
- Game T-bone with garlic butter
- Boerewors
- Bratwurst





## DESSERTS

Panna Cotta  
Pavlova with seasonal fruits  
Chocolate brownie  
Fruit salad  
Malva Pudding with custard  
Apple crumble with custard  
Sticky toffee pudding with custard  
Ice cream with condiments

feel free to contact us should you have any enquiries or go onto our website for more details or our Facebook/ intstagram

[www.farmhousdeli.com](http://www.farmhousdeli.com)

@farmhouse\_deli